



<b>Briefing for:</b>	Corporate Parenting Advisory Committee
<b>Title:</b>	Performance Monitoring: Children and Families – July 2009 Data
<b>Lead Officer:</b>	Eleanor Brazil
<b>Date:</b>	7 September 2009

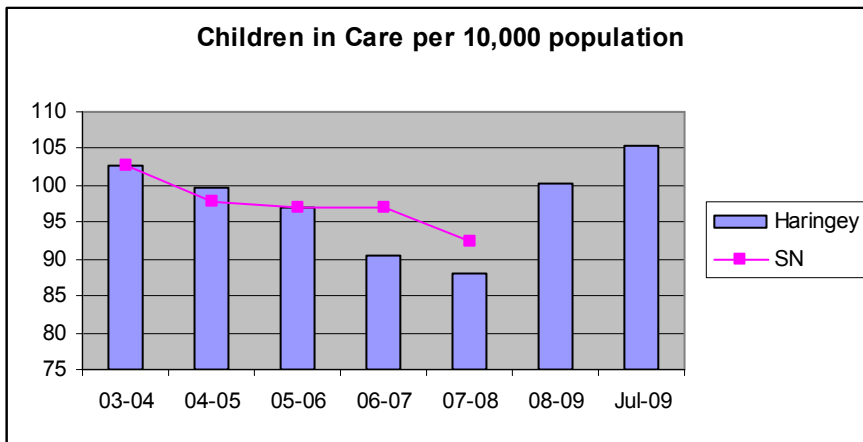
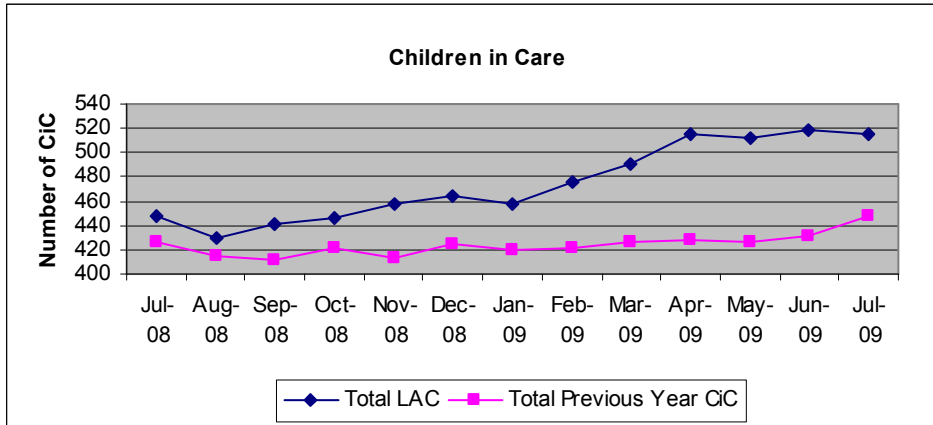
**1. To provide a monthly update of performance monitoring activity in relation to Children in Care (CiC) within the Children and Families Service. Please note that up to date comparative data has not yet been published for 2008/2009 – this report refers to 2007/08 statistical neighbour data and will be amended as data becomes available.**

## **2. Background information**

2.1. The total number of CiC at the end of July 2009 was 516 compared to 519 children in June (105.4 per 10,000 population compared with 92.4 per 10,000 for our statistical neighbours in 2007/08). Of the 516, 54 children are unaccompanied minors.

2.1.1. 17 children became looked after in July and 18 children ceased to be looked after. Care proceedings were initiated on 11 children in July.

2.1.2. Since early 2008 we have seen increasing numbers of children in our care population. The increasing numbers entering care each month have not been offset by any acceleration in numbers of children ceasing to be in care – either by returning home, by adoption or special guardianship or by leaving care at age 18. The first chart below compares the number of children in care over the last year with the previous year and the second chart compares the yearly position with our statistical neighbour averages over the same period.



2.2. Allocations. All CiC had an allocated Social Worker in July. At present reports are not able to monitor social worker turnover for individual children, Members to consider whether a small manual sample be undertaken each month to provide an indication of turnover within the children in care team.

2.3. Visits to CiC. 93.6% of CiC had an up to date visit at the end of July. 33 children did not have an up to date visit.

2.4. NI 66 Reviews in timescale. The percentage of CiC for whom there was a review held in timescale was 98% at the end of July. Out of 495 children who had been looked after continuously for the previous 4 weeks, 486 had been reviewed within the required timescales. The number of reviews held out of timescale was 9.

2.5. Adoptions and special guardianship of CiC. 9 children have been made subject to a special guardianship order in the year to date. 3 of these were special guardianship orders and 6 adoption orders.

2.6. NI63 - This indicator is based on children under 16 who have been looked after for at least 2.5 years and have been in the same placement for at



## Haringey Council

least two years or are placed for adoption. The position at the end of July is 61%. Of 145 children who had been looked after for at least 2.5 years, 89 were in the same placement for at least 2 years.

2.7. NI62 - This is an indicator of the number of children who have had 3 or more placements during the year. In the last 12 months, 13.6% of children have had 3 or more placements (70 out of 516). Our target for this indicator is 11%. Since April 09, 14 children have had 3 or more placements and 68 children have had 2 placements.

2.8. Personal Educational Plans (PEP). 82.5% of CiC have a PEP in place at the end of July. Out of 400 children who require a PEP, 330 have one. 59% of these are up to date (195 out of 330). Work to review PEPs will commence from the beginning of the new school year in September.

2.9. Health Assessments. Children in Care are expected to have a health assessment undertaken once a year. Although this indicator is only collected annually and based on the period April 09 to March 10, to assist us in monitoring progress in this area we have developed an indicator which looks at the percentage of children who have been in care for over a month who have had a health assessment within the previous 12 months. The position at the end of July is 60% (306 out of 511).

2.10. Dental Checks. Children in Care are expected to have a dental check at least once a year. As above, we have developed an indicator which looks at the percentage of children who have been in care for over a month who have had a dental check within the previous 12 months. The position at the end of July is 50% (256 out of 511).

2.11. Outcome indicators for children in care – please see appendix 1 for details of annual outcome indicators for children in care (children who were in care for 12 months or more to 30 September 2008). These include data relating education, health, offending etc. Appendix 2 is a breakdown of Haringey data for 2007 and 2008.

2.12. NI 147 Care Leavers in suitable accommodation. This indicator looks at care leavers who were in suitable accommodation on or around their 19th birthday. The percentage of care leavers in suitable accommodation at the end of July is 78.9% (15 out of 19 who turned 19 in the year to date).

2.13. NI 148 Care leavers in Education, Training or Employment. This indicator looks at care leavers who were in Education, Training or Employment on or around their 19th birthday. 63.2% of young people who have turned 19 in the year to date were in Education, Training or Employment on or around their 19th birthday (12 out of 19 who turned 19 in the year to date). These figures are based on low numbers who have left care so far and will vary considerably from month to month.



**Haringey Council**

2.14. Audits of Quality. A new audit framework has been developed and will be implemented throughout September with a view that the first results of audits undertaken in October being available in November. Audits relating to children in care will be fed back to members through the CPAC meeting on 7 December.

**3. Options for consideration**

**4. Financial Implications - none**

**5. Legal Implications - none**

**6. Policy Implications - none**

**7. List the proposed routing for the report through the formal decision making process**

**8. Appendices – Appendix 1 – Report on outcomes for children in care 2008. Appendix 2 – Haringey breakdown of outcomes for children in care data for 2007 and 2008**